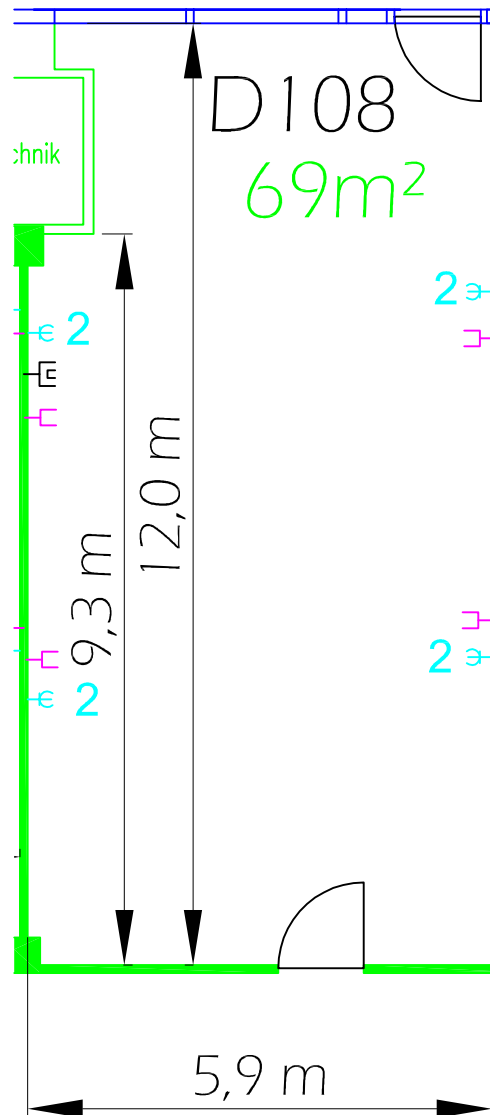
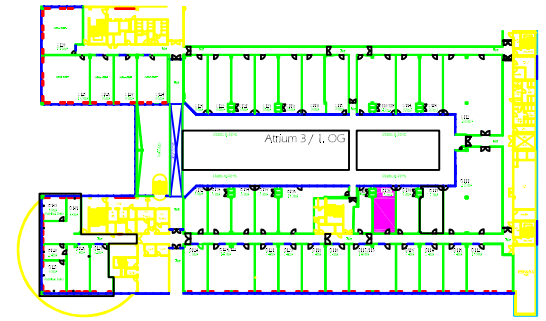


D108
(M,O,C, - Atrium 3, 1.OG / 1st floor)



Raumhöhe:
ceiling height: 3,10 m (bis Beleuchtung / *up to lighting*)
 3,15 m (bis Decke / *up to ceiling*)


Bodenbelastbarkeit:
floor load limit: 500 kg/m²

Teppichbelag:
carpet: grau gemustert
grey patterned

Deckeninstallation:
ceiling installation: Sprinkleranlage, Leuchtstoffröhren
sprinkler system, fluorescent tubes

Türmaß:
door measurement: 0,93 m x 2,22 m (Atriumseite / *atrium side*)
 1,06 m x 2,09 m (Gangseite / *aisle side*)

 Klimagerät / *air conditioner*

 Glasfront / *glass front*

 2ϕ Schuko-Steckdosen / *schuko safety sockets*

 TV-Anschluss / *TV connection*

 Telefon-Anschluss / *telephone connection*

Maßstab / *scale:* 1:100