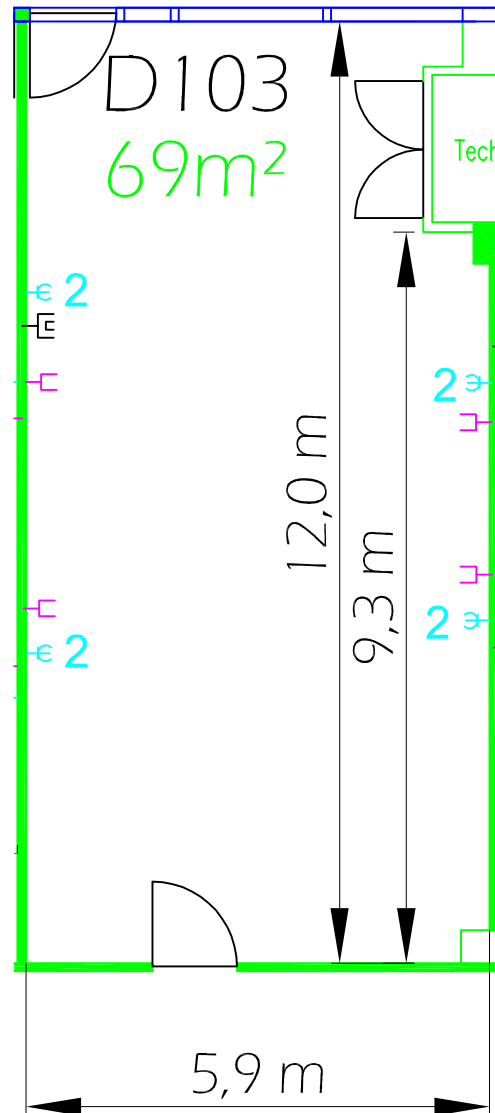
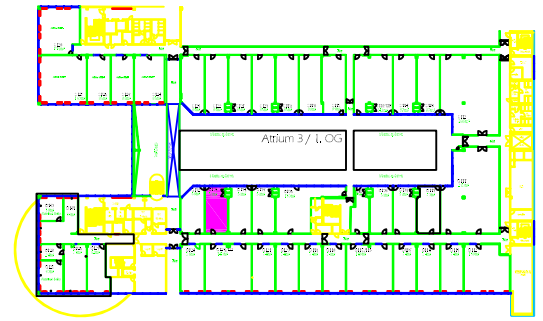


D103

(M,O,C, - Atrium 3, 1.OG / 1st floor)



Raumhöhe: 3,10 m (bis Beleuchtung / up to lighting)
ceiling height: 3,15 m (bis Decke / up to ceiling)


Bodenbelastbarkeit: 500 kg/m²
floor load limit:


Teppichbelag: grau gemustert
carpet: grey patterned

Deckeninstallation: Sprinkleranlage, Leuchtstoffröhren
ceiling installation: sprinkler system, fluorescent tubes


Türmaß: 0,93 m x 2,22 m (Atriumseite / atrium side)
door measurement: 1,06 m x 2,09 m (Gangseite / aisle side)

 Klimagerät / air conditioner

 Glasfront / glass front

 2⊕ Schuko-Steckdosen / schuko safety sockets

 ⊔ TV-Anschluss / TV connection

 ⊔ Telefon-Anschluss / telephone connection

Maßstab / scale: 1:100